

PORTFOLIO OF SERVICES



CONDITION ASSESSMENTS

CROM provides inspections and cleanings to all infrastructure while also providing disinfecting services for public water infrastructure.

STRUCTURAL REPAIR

CROM's design/build approach enables us to create and execute solutions to complex structural issues.

CERTIFIED HIGH PERFORMANCE COATING INSPECTORS & APPLICATORS

CROM is a specialist in high performance coatings and plural component capabilities.

INFRASTRUCTURE UPGRADES

CROM is equipped with unparalleled experience, custom built equipment, and certified technicians to develop and implement the required upgrades.

HYDRODEMOLITION

CROM utilizes state of the art equipment and robotics to minimize unnecessary damage to substrates while providing the best safety and ergonomic techniques for our technicians.

SHOTCRETE

Using our Certified Shotcreter's and custom built equipment, CROM is able to offer unique, high quality shotcrete application solutions.

SPECIALTY FABRICATIONS

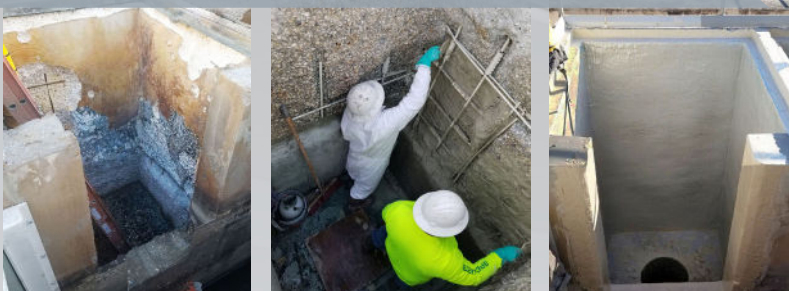
Our in-house engineering and skilled fabricators have been creating high quality custom solutions to meet our client's needs in the following materials: aluminum, stainless steel, carbon steel, fiberglass, precast concrete, and lumber.

We also provide OSHA compliant safety modifications fabricated specifically to custom fit your existing infrastructure.

CONTINUING SERVICES

Our team is able to analyze and recommend procedures for preventative and emergency needs for all structures associated with water and wastewater treatment facilities.

TANKS YOU KNOW



RESTORATIONS YOU NEED

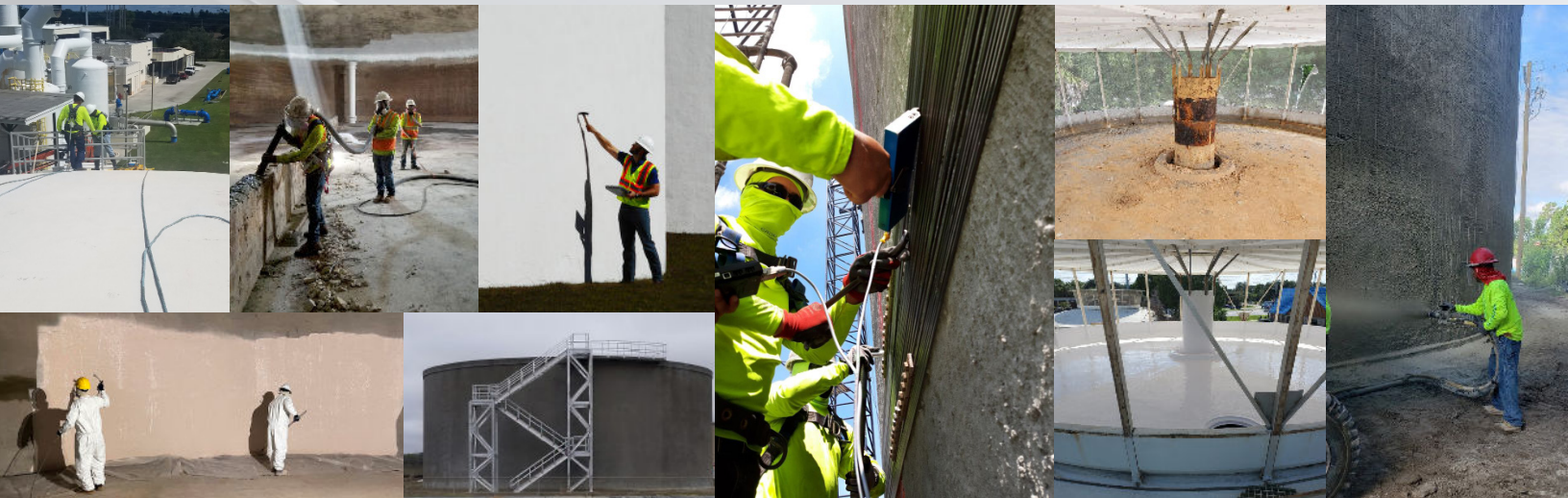
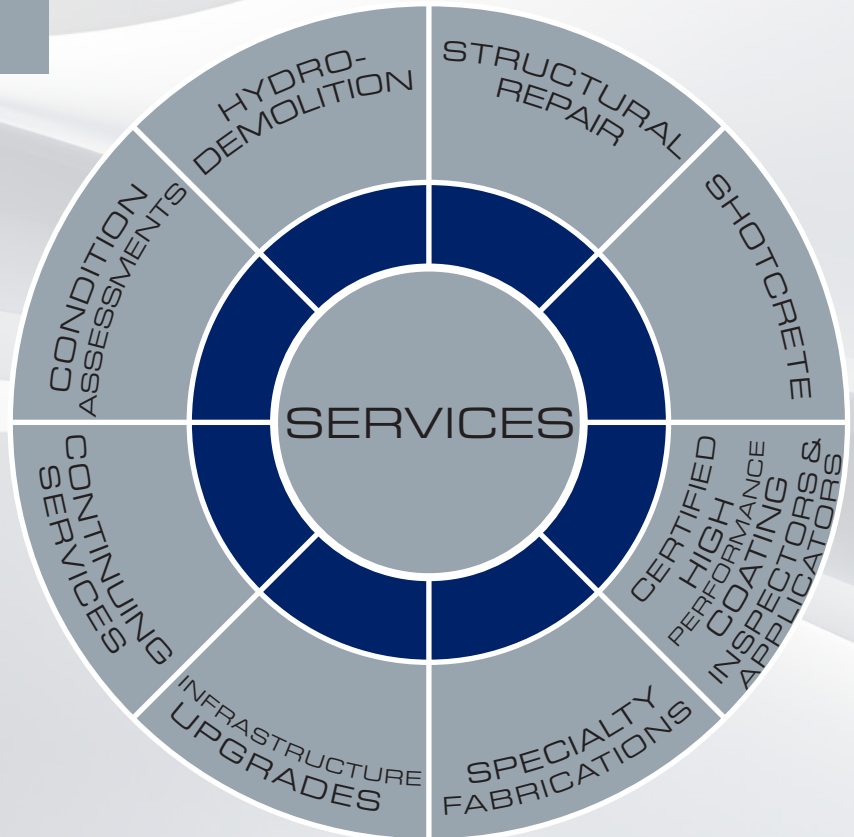
PORTFOLIO OF SERVICES



OFFERING TURN-KEY SOLUTIONS ACROSS MISSION-CRITICAL WATER APPLICATIONS AS AN INNOVATOR, DESIGNER, AND SERVICE PROVIDER.

WHY CHOOSE CROM?

- Trusted as a water infrastructure solution provider by a demonstrated track record of exceptionality, CROM is a one-of-a-kind operator in the water market.
- Established technological ingenuity in an industry that demands highly technical and adaptable solutions.
- Continually evolving and, with an increasingly stringent regulatory environment, requires subject-matter expertise.



LOCATIONS

GAINESVILLE, FL | HEADQUARTERS

AUSTIN, TX | CHATTANOOGA, TN | FT MYERS, FL | RALEIGH, NC | WEST PALM BEACH, FL

WWW.CROMCORP.COM