

COMPETITIVE ADVANTAGES OF CROM²[™]

- Notable Durability
- Superior Watertightness
- Dependable Value
- Unrivaled Longevity



**Patent Pending*

- Cold Joint Free Construction
- Permanent Compression Eliminates Allowable Crack Widths
- Smooth Interior and Exterior Shotcrete Finishes

UNIQUE ATTRIBUTES

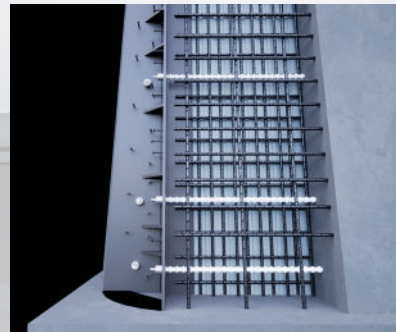
Floor to Wall



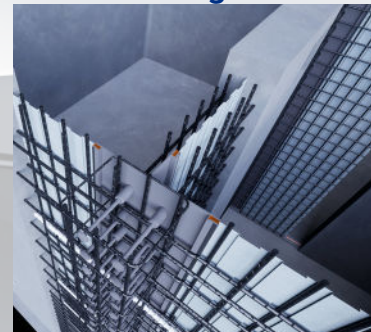
Corner



External Wall



Bisecting Wall



LOCATIONS

GAINESVILLE, FL | HEADQUARTERS

AUSTIN, TX | CHATTANOOGA, TN | FT MYERS, FL | RALEIGH, NC | W. PALM BEACH, FL

WWW.CROMCORP.COM

CROM²™

WATERTIGHT TENSIONED STRAIGHT WALL TANKS

1



Floor Steel, Columns & Waterstop

Reinforcing steel is installed in the floor, floor/wall waterstop are placed, then corner columns and Extended T-plates are erected at all bisecting walls.

2



Floor Casting

The floor is cast monolithically with CROM trained tank builders.

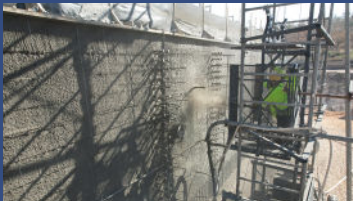
3



Wall Form & Diaphragm

Once the floor is cast, the wall form is erected on the inside of the tank to allow installation of the diaphragm. The diaphragm is hung on the wall form and connected to the columns, extended T-plates, and floor/wall waterstop. These joints are then epoxy sealed to create watertight connections.

4



Exterior & Interior Walls

Exterior encasement of the diaphragm and the structural core wall is accomplished with shotcrete (pneumatically applied concrete) in successive layers until the required wall thickness is achieved.

5



Interior Shotcrete

With the exterior core wall complete and the wall form removed, the interior walls are shot using the same process as the exterior to create a smooth homogenous shotcrete finish with round inside corners to prevent dead spots and grit accumulation.

6



Permanent Compression & Exterior Covercoat

The unique columns allow for the straight walls to be put in permanent compression while maintaining watertight connections. The exterior covercoat is then shot and finished using CROM's proprietary process to create a smooth, cold joint free, homogenous finish.

7



Exterior Corners

Lastly, the exterior corners are shot using the CROM covercoat process with a rounded finish to create the distinctive CROM Squared appearance.

8



Exterior Aesthetic Coating System

Exterior coatings are optional as an aesthetic enhancement but are not required to ensure longevity of the structure.