

# CROM<sup>®</sup>

PRESTRESSED CONCRETE TANKS  
COATINGS and RESTORATIONS



# CROM<sup>®</sup>

# OVER 65 YEARS OF DESIGN & CONSTRUCTION EXCELLENCE

## INTRODUCTION TO CROM

CROM® is a specialist in the design and construction of prestressed concrete tanks and infrastructure restoration and repair. With over 65 years of experience, our continued success is driven by our self-performing skilled team with zero division of responsibility for our clients. CROM is built from a foundation of core values that is committed to safety, professional integrity, and high quality execution.

## HISTORY OF CROM

In the early 1950's, J.M. Crom, Sr. and three associates, Ted Crom, Jack Crom, Jr., and Frank Bertie, established The Crom Corporation, with headquarters in Gainesville, Florida, for the prime purpose of perfecting the design and construction techniques of tanks utilizing composite walls. Since then, their successors have continued the tradition of excellence initiated by the company's founders.



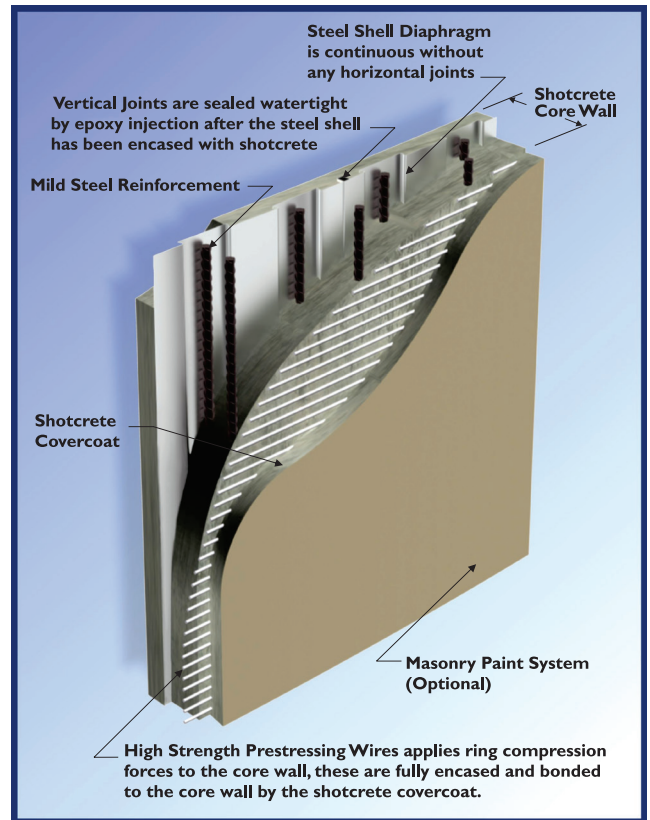
[www.cromcorp.com](http://www.cromcorp.com)





# PRESTRESSED CONCRETE TANKS

CROM has designed and built over 4200 concrete tanks since 1953, with capacities ranging from 50,000 to over 30,000,000 gallons. The success of CROM has been based on our understanding of all phases of design, construction, and management required to produce a tank that is leak-free with life expectancies in excess of 50 years. CROM tanks are designed to AWWA D110 and ACI 372 standards. As a founding member of both design committees, CROM remains a “leader in the industry”.



## WALL SECTION DETAIL AWWA D110 TYPE II

### COMPOSITE WALL DESIGN: SHOTCRETE WITH GALVANIZED STEEL DIAPHRAGM

# COATINGS AND RESTORATIONS

## INFRASTRUCTURE REPAIR SPECIALISTS

CROM Coatings and Restorations brings the experience, quality, and reliability of CROM’s 65+ years of design and construction excellence to the restoration of aging infrastructure. CCR specializes in wet/dry inspections, high performance coatings, shotcrete/concrete structural repairs, epoxy and polyurethane crack and leak injection, and carbon-fiber reinforcing.



**BEFORE**



**AFTER**

### CCR FEATURE PROJECT: STRUCTURAL CONCRETE REPAIR & WASTEWATER PROTECTIVE COATINGS



# PRESTRESSED CONCRETE TANKS

(TYPICAL INSTALLATIONS)

## WATER STORAGE TANKS



## FLOW EQUALIZATION TANKS



## ARCHITECTURAL TREATMENT



## TANKS FOR REUSE WATER



## ANAEROBIC DIGESTERS



## MODIFIED EGG-SHAPED DIGESTERS



## INTEGRATED AERATORS



## OXIDATION AND CLARIFIER TANKS





# CHILLED WATER THERMAL ENERGY STORAGE

- K-12 SCHOOLS & UNIVERSITY CAMPUSES
- COMMERCIAL
- POWER GENERATION
- INDUSTRIAL



# INDUSTRIAL PROCESS

- FOOD PROCESSING
- PULP & PAPER
- POWER GENERATION
- CHEMICAL COMPANIES



OVER  
**4200**  
TANKS  
BUILT SINCE  
**1953**



# COATINGS AND RESTORATIONS

## INFRASTRUCTURE REPAIR SPECIALISTS

### COATINGS

- INTERIOR AND EXTERIOR
- INDUSTRIAL
- ABOVE GROUND PIPING AND GALLERIES
- WATERPROOFING
- LOGOS

### STRUCTURAL REPAIR

- EPOXY CRACK INJECTION
- JOINT REPAIR
- UNDERFLOOR GROUTING
- FIBER-REINFORCED POLYMERS
- RESURFACING
- HEADWORKS REPAIR AND RESTORATION





# SHOTCRETE RESTORATION

- ARCHITECTURAL
- WET MIX
- DRY MIX
- CALCIUM ALUMINATE



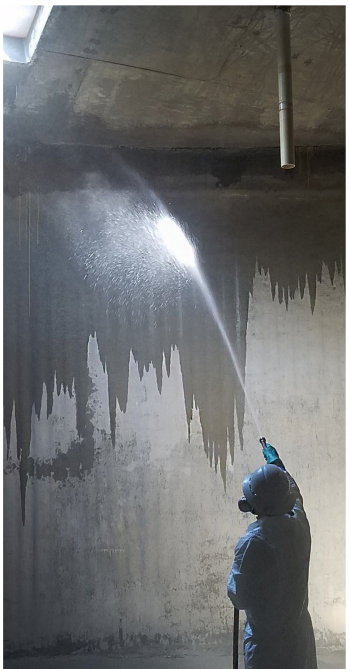
# RETROFIT & MODIFICATION

- WALL SLEEVES
- UNDERFLOOR PIPING
- BAFFLE WALLS/CURTAINS
- ACCESSORIES
- MANWAY ADDITIONS



# INSPECT, CLEAN & DISINFECT POTABLE WATER STRUCTURES

- WET/DRY INSPECTIONS AND WASHOUTS
- DIVE INSPECTIONS
- STRUCTURE CLEAN OUT



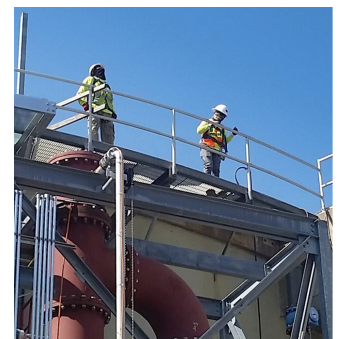
# FABRICATE & MAINTAIN ACCESSORIES (TYPICAL)

- VENTILATOR
- HATCH COVER
- LIQUID LEVEL INDICATOR
- OVERFLOWS



# SAFETY & SECURITY RETROFIT

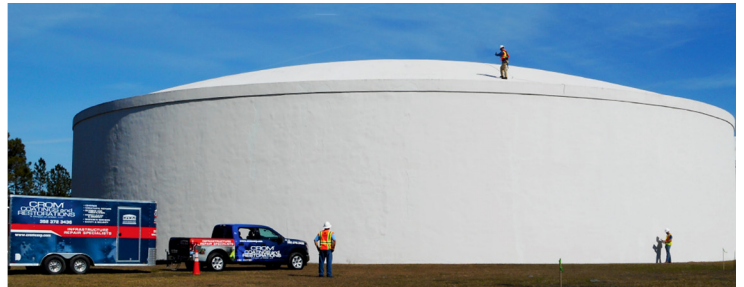
- HANDRAILS
- FALL PROTECTION
- SAFETY CLIMBS AND CABLES
- SECURITY GATES
- INTERIOR & EXTERIOR LADDER







# SAFETY RELIABILITY QUALITY



# **CROM**<sup>®</sup>

250 S.W. 36TH TERRACE | GAINESVILLE, FLORIDA | 32607-2889  
PHONE 352.372.3436 | FAX 352.372.6209 | [WWW.CROMCORP.COM](http://WWW.CROMCORP.COM)  
CHATTANOOGA, TN - FORT MYERS, FL - GAINESVILLE, FL - RALEIGH, NC - WEST PALM BEACH, FL

Copyright © 2018 by CROM, LLC. All Rights Reserved